

RMFT 2.4.2 – Release Notes September 2009

RMFT allows organizations to architect efficient workflows and facilitates user-friendly file exchanges so IT resources can focus elsewhere. As a secure communications platform, RMFT offers key features such as authentication, file access authorization, encrypted transport, and comprehensive auditing over the file transfer process. As an automation solution, RMFT allows organizations to schedule and execute end-to-end transfer processes with guaranteed delivery using standard and/or proprietary protocols.

RMFT 2.4.2 introduces several new and improved features including:

- A redesigned management console for an improved user experience
- Support for multiple Web Front-End Servers for improved responsiveness and availability
- Unauthenticated download (enabling users to download packages without logging in)
- A client SDK for integrating RMFT's package sending capabilities into third-party applications
- Embedded database for small organizations and easy evaluation.

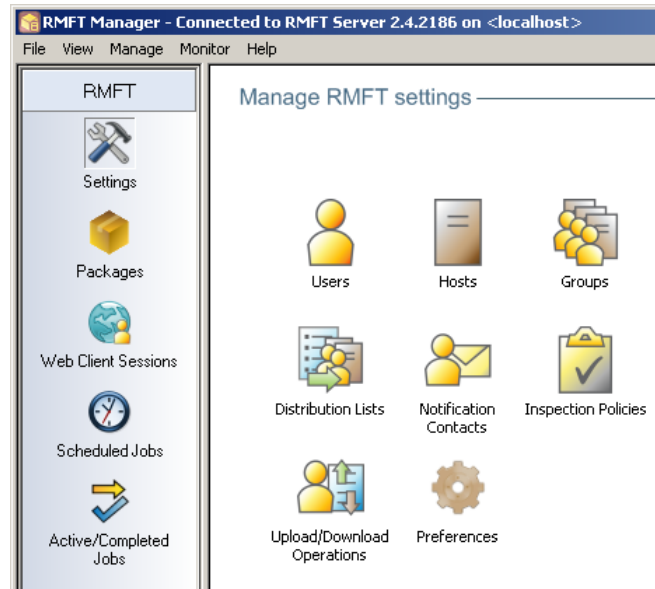
Significant improvements have also been made to security, stability, and performance.

For more information about a particular feature, please refer to the *RMFT Administrator's Guide*.

Management Enhancements

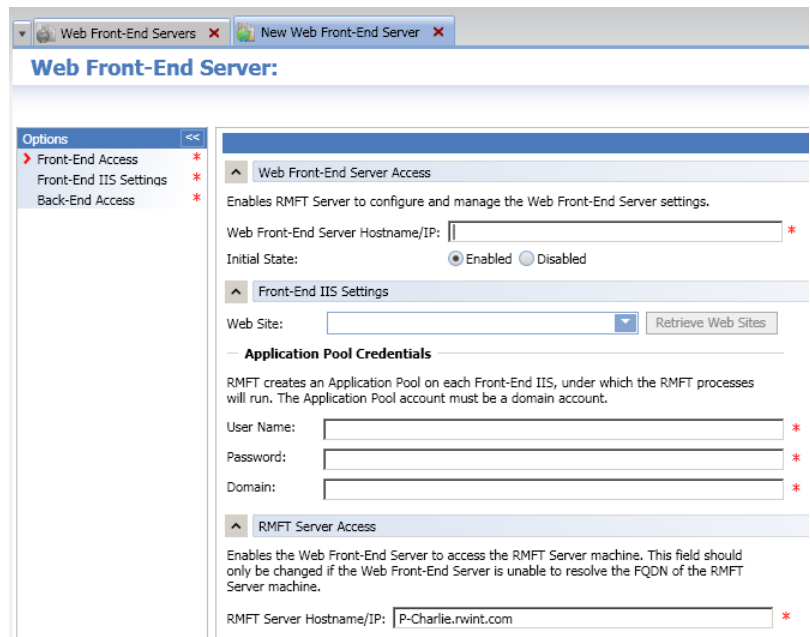
RMFT Management Console

The new RMFT management console eases administration by enabling administrators to open multiple windows at the same time. The gradual introduction of a Tabbed Document Interface (TDI) currently implemented in the Web Front-End Servers and Contacts windows, enables administrators to easily navigate between different entity instances.



Web Front-End Servers

Organizations with large numbers of users can integrate existing Load Balancing solutions with RMFT multiple Web Front-End Servers support for more efficient handling of user requests, improving responsiveness and availability.



Unauthenticated Download

By default, users need to authenticate their identity before downloading packages. In trusted environments however, the security provided by the login process may not be required and may even be a hindrance to non-savvy users. In these and similar cases, users can now be allowed to download packages without logging in, simply by clicking the link in the email notification.

HTML Notifications

Support has been added for HTML-based notification templates, allowing organizations to brand RMFT email notifications with their own corporate look and feel.

The screenshot shows a configuration window for an email notification template. The title bar reads "Template Name: My Template". The "Name" field contains "My Template". The "Description" field contains "Sent to users when a new package arrives in their inbox and allows them to downl...". Under "E-mail Properties", the "Send" section has an unchecked checkbox for "As package sender" and a note: "If the package sender does not have an email address (e.g. hosts), the email address in the 'As' field will be used instead." The "As:" field is empty. The "Send as HTML" checkbox is checked. The "Subject" field contains "New RMFT Package from \$(SENDER)". The "Body" field contains "A new package has arrived in your RMFT inbox.
<p>Package details:
".

Maintenance and Security Enhancements

Hot Directory Monitoring

RMFT can now be configured to display a warning in Windows Event Viewer and RMFT System Health Monitor if files remain in a specific Hot Directory for longer than a given time period.

The screenshot shows the "Hot Directory Warnings" configuration window. It contains the text: "RMFT can be configured to report a warning to Event Viewer and RMFT System Health Monitor if files remain in the Hot Directory for longer than a given time period." There are three radio button options: "Use default setting (RMFT Site Preferences > Monitor and Reports)" (which is selected), "Show a warning if files remain in the Hot Directory for more than [0] hours [0] minutes", and "Never show a warning".

Log Files Cleanup

RMFT now deletes old log files of non-job related processes (e.g. QQS logs), preventing accumulation of log files on the disk. By default, logs that were not modified in the last 30 days will be deleted. This value can be changed by editing the **Time To Keep Logs** field in C:\RMFT\Config\bhub.cf.

Security Updates

RMFT 2.4.2 resolves potential vulnerabilities, thereby preventing various forms of attack such as SQL Injection, Directory Traversal and Cross Site Scripting while also preventing unauthorized access to restricted files.

Embedded Database

The RMFT installation kit now includes SQL Express for rapid deployment. This allows organizations who do not have their own database to start working with RMFT immediately while also enabling potential customers to evaluate the product on a single machine, without needing to pre-install a database.

Integration with Business Applications

RMFT Client .NET SDK

The RMFT Client SDK enables organization to easily integrate RMFT's package sending capabilities into their own applications. The SDK is written in .NET enabling it to support a variety of programming languages such as C#, C++ and Visual Basic.

Known Issues

The following is a list of known issues with RMFT 2.4.2. Where applicable, a workaround is provided to resolve the issue.

- **Google Chrome** - The RMFT Java Applet may fail to load when RMFT Web Client is run on Google Chrome for the first time. Pressing F5 will resolve the problem. (Though usually you only need to press F5 once, you may need to keep pressing F5 until the RMFT Java Applet is successfully loaded).
- **RMFT Web Site Support on 64-Bit Machines** – By default, the **RMFT Website** ISAPI filter on 64-bit machines is a 64-bit DLL. In order for the RMFT Website to work on 64-bit machines, the ISAPI filter path needs to be changed so that it points to the 32-bit DLL.

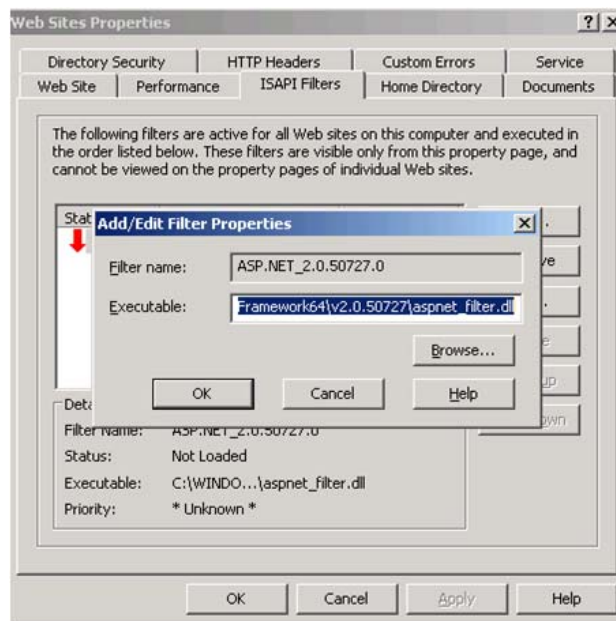
Note: IIS cannot operate in 32-bit and 64-bit modes simultaneously. In other words, applications that require 64-bit functionality should not be run on the same IIS as the RMFT Web site.

To change the ISAPI filter path:

1. Open IIS.
2. In the left pane, right-click the **Web Sites** and select **Properties**.

The **Web Site Properties** dialog box opens.

3. In the **ISAPI Filters** tab, click **Edit**.

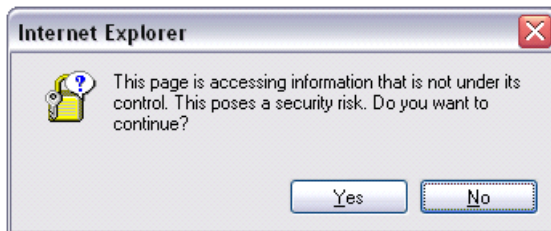


4. In the **Executable** field, change the ISAPI filter path from:
~\Framework64\v<version>\aspnet_filter.dll

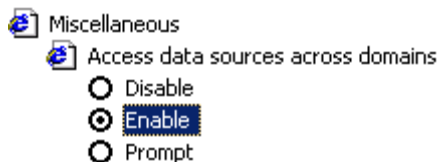
to:

~\Framework\<version>\aspnet_filter.dll

5. In the left pane, right-click **DefaultAppPool** and select **Recycle**.
 6. Right-click **DefaultAppPool** and select **Stop**, then, right-click **DefaultAppPool** again and select **Start**.
- **IE6 on Windows Server 2003** – IE6 users may encounter the following error when attempting to log in to RMFT Web Client on Windows Server 2003:



To resolve this issue, users need to change the **Access data sources across domains** security setting to **Enable** (**Tools > Internet Options > Security > Select a Zone > Custom Level**).



- **“HTTP 413 Request Entity too Large” error** – Occurs when RMFT Desktop Client users try to send a package using “IIS Secure” mode or when RMFT Web Client users try to send a package using Java secure mode. This issue can be resolved by increasing the default IIS request size (applies to IIS 6 only). For full instructions, please refer to:

http://www.repliweb.com/resources/faq/managed_file_transfer/faq_531.php

- **Files Names with non-Latin Characters are Displayed Incorrectly** – RMFT Desktop Client and RMFT Web Client in Lite Mode both allow the sending of files whose names contain non-Latin characters. However, such files will not be displayed correctly in RMFT Manager or RMFT Web Client (non-Latin characters will be replaced with random characters).

RMFT Web Client in Enhanced Mode does not allow the transfer of files with non-Latin characters in their names.

- **Cluster Installation Update** – After installing or upgrading RMFT in a cluster environment, an update needs to be performed on each of the additional (i.e. secondary) cluster nodes.

For information about the update procedure, please contact <http://support.repliweb.com>.

Bug Fixes

Below is a list of issues that have been resolved in RMFT 2.4.2.

- Packages were not being deleted as configured due to a delay in writing audit reports to the database.
- The archive server would crash if a file with a long name or path was copied to the Hot Directory.
- On IE7 or IE8, the RMFT Web Client ActiveX installation would sometimes get caught in a loop.
- Job recovery state was not reflected in the Package Monitor.
- Files with a % in their name could not be uploaded or downloaded with ActiveX or Java.
- When a custom password hook was configured, users prompted to change their password could leave the new password field empty and still get a "Password Changed Successfully" message.
- In Lite mode using Safari or Chrome web browsers, users would receive a "The location <FILENAME> is not valid" error message when trying to send a package.
- Jobs submitted by users who were once members of the local administrator group but were then removed from it failed and the Health Monitor did not indicate any problem.
- Email verification would fail if the address was entered as follows:
DISPLAY NAME<email@domain.com>
- RMFT Cluster installation would try and install to the default installation path instead of the user-defined path.
- Changes to the Default.XML **Package Expiration** settings would be hidden from LITE RMFT users when creating a new package.
- Not all the family job logs were written to the **Failed_Retrievals** folder, only the parent job.
- Defining the temporary and target directories to be the same in the FTP Push scenario would cause the transfer to fail.