

# **R-1 v4.1.1 Release Notes**

## **June 2009**

RepliWeb Deployment is an industry-recognized web deployment and content replication solution. Installed in over one thousand organizations, RepliWeb Deployment delivers quantifiable improvements to content and application readiness, and it streamlines web operations associated with updates and release cycles.

The 2009 release of RepliWeb Deployment v4.1.1 introduces new features and enhancements.

In R-1 v4.1.1, administrators can better control their disk space resources by determining the disk space limits for R-1 jobs.

The Bulk Changes feature allows making editing changes to the settings and properties of multiple jobs.

R-1 v4.1.1 has expanded its IIS deployment capabilities to include the Simple IIS 7 Configuration feature – a Command-Line tool developed to enable the quick setup and deployment of IIS 7 Configuration jobs. Additionally, IIS 7 Configuration jobs can now be scheduled as continuous updates.

Using the Pre / Post Commit Commands feature, users can define actions to run before or after committing the changes to the target.

A new Reports Pane enables users to view key job reports in the main Console window. Pre-distribution downloads can now be loaded from templates to reduce job definition time. Additionally, the Web UI now includes the Rollback option.

R-1 API code samples that demonstrate the usage workflows of the Submit and DoCommand functions are now included in the R-1 installation folder.

## New Features

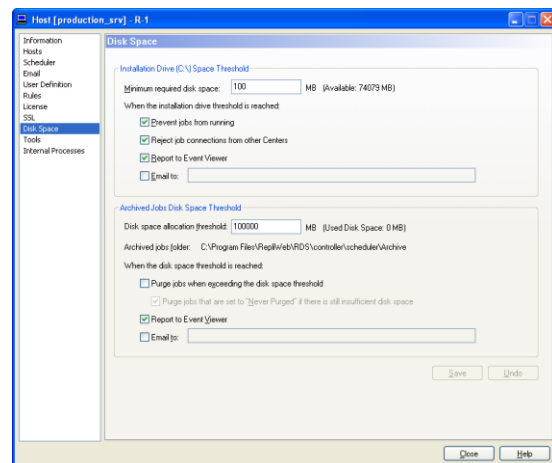
### Disk Space

The Disk Space functionality enables setting the amount of disk space that will be used by R-1 jobs. Using this functionality, administrators can control their disk space resources in real time and make sure that their server usage guidelines are met.

#### Disk Space Tab

The Disk Space tab appears in the Center Management dialog and enables limiting the amount of disk space that will be used by R-1 jobs, enabling administrators to:

- Set the minimum disk space policy for running R-1 jobs on the installation drive.
- Set the disk space usage limit for the archived jobs repository, and to determine the system's behavior in case this threshold is reached.



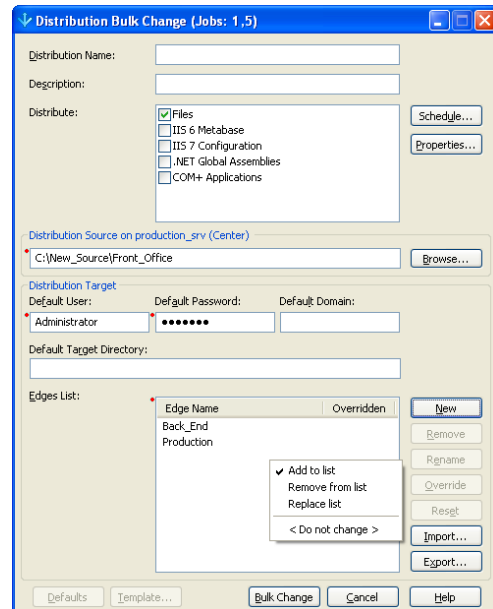
#### Rollback Tab

For jobs requiring the use of rollback, administrators can now set the rollback directory's disk space limit. This feature provides administrators with extra control over saving rollback data that can potentially consume large amounts of resources.

## Bulk Changes

The Bulk Changes feature extends R-1 functionality by allowing the user to update the job definitions of multiple Scheduled or Continuous Update jobs through a single operation.

For convenience, each field provides a context menu with additional editing options while fields that are set to undergo changes are indicated with a red asterisk.



## Simple IIS 7 Configuration

R-1 v4.1.1 extends its IIS deployment capabilities by providing a quick and easy-to-use Command-Line tool for setting up IIS 7 Configuration jobs. This feature is intended for setting up simple IIS 7 Configuration jobs while the extended Command-Line functionality is available when defining IIS 7 Configuration jobs using the IIS 7 Preview XML file.

## Pre / Post Commit Commands

R-1 enables defining actions to run before or after the actual transfer of files (Commit stage) on the Edge, such as stopping IIS before, and starting it again after file transfer.

## Feature Enhancements

### GUI

**Pre-Distribution Download** – R-1 supports loading pre-distribution download jobs from templates, thus reducing the time it takes to define such jobs.

**Reports Pane** – A new Reports pane extends job viewing capabilities by enabling users to conveniently view key job reports in the main Console window.

### Web UI

**Rollback** – To enhance the Web UI's functionality, authorized users can now roll back the last instance of scheduled, On Demand jobs.

This option is visible by default.

**Center Time** – The Web UI now displays the actual Center time.

### API

**COM API Samples** – R-1 COM API code samples of the Submit and DoCommand functions have been added to the R-1 installation folder. The samples appear in the following languages: C, C#, VB, VB.NET, and VBScript.

### GUI, CLI and API

**Continuous Update** – R-1 has expanded its IIS deployment capabilities to enable IIS 7 Configuration jobs to run as continuous updates.

## Fixed Issues

### Scheduled Rollback

The issue with performing rollback on Scheduled jobs has been resolved.

### Web UI Preview

**Truncated Server Names** – Server names (BIOS) that were longer than 10 characters appeared truncated in the Job Preview window. This issue has been resolved.

**Missing Distribution Preview Icons** – Icons for Distribution snapshot results were not displayed in the Job Preview window. This issue has been resolved.

## Known Issues

### GUI

**Bulk Changes** – Bulk Changes does not support Pre-Distribution Downloads, Containers, or Templates.

### Web UI

**Installations and Upgrades** – When configuring the R-1 Web UI during clean installations or upgrades on UNIX machines where libxml is not installed, a symbolic link should be

**created:** `ln -s </install_path>/repliweb/rds/common/rw_libxml /usr/lib/<lib name>`

For more information, please refer to the Apache section in the [R-1 User Guide](#).

## Prerequisites

**IIS 7 Configuration Replication** – On Windows Vista, IIS 7 Configuration requires SP 1 or higher.

For any additional information, contact us at [support.repliweb.com](http://support.repliweb.com)